

Manual:Webfig

Summary

WebFig is a web based RouterOS configuration utility. It is accessible directly from the router and no additional software is required (except web browser with JavaScript, of course).

As Webfig is platform independent, it can be used to configure router directly from various mobile devices without need of a software developed for specific platform.

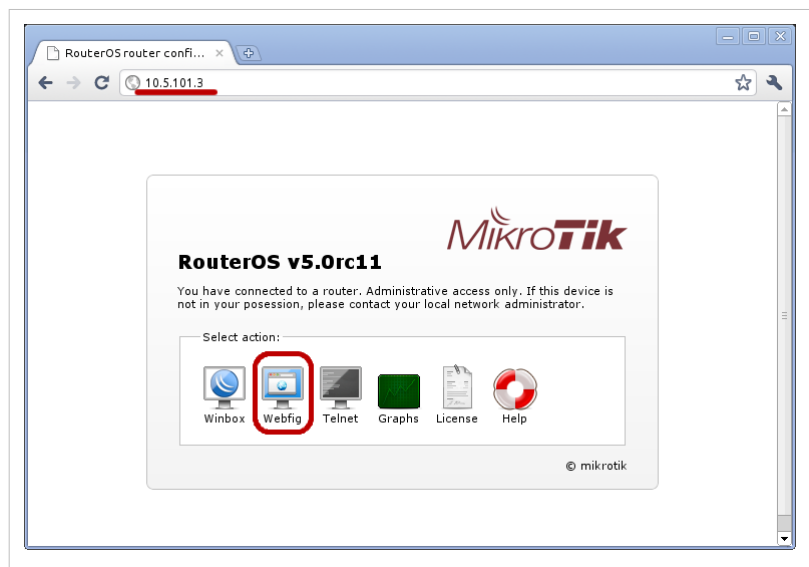
WebFig is designed as an alternative of WinBox, both have similar layouts and both have access to almost any feature of RouterOS.

Connecting to Router

WebFig can be launched from the routers home page which is accessible by entering routers IP address in the browser. When home page is successfully loaded, choose webfig from the list of available icons as illustrated in screenshot.

After clicking on webfig icon, login prompt will ask you to enter username and password. Enter login information and click connect.

Now you should be able to see webfig in action.

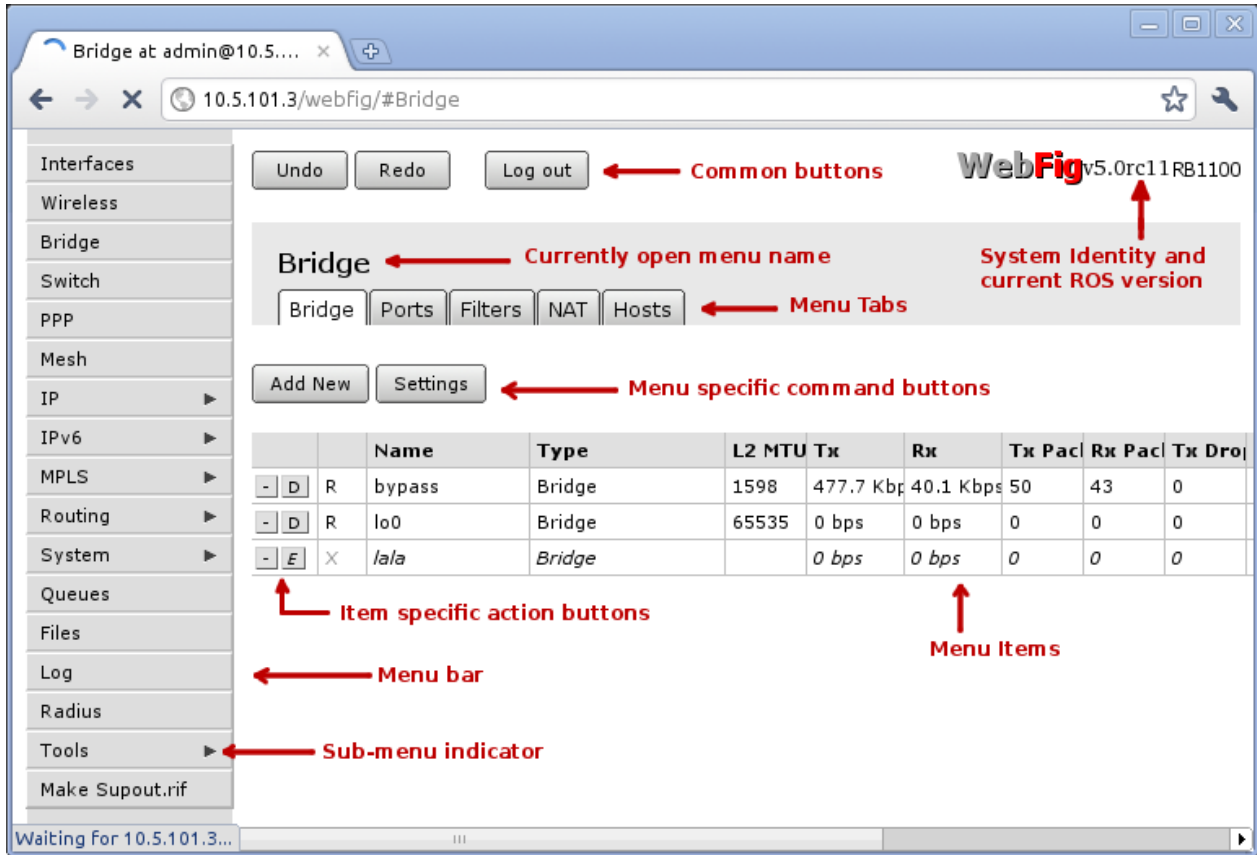


IPv6 Connectivity

RouterOS http service now listens on ipv6 address, too. To connect to IPv6, in your browser enter ipv6 address in square brackets, for example `[2001:db8:1::4]`. If it is required to connect to link local address, don't forget to specify interface name or interface id on windows, for example `[fe80::9f94:9396%ether1]`.

Interface Overview

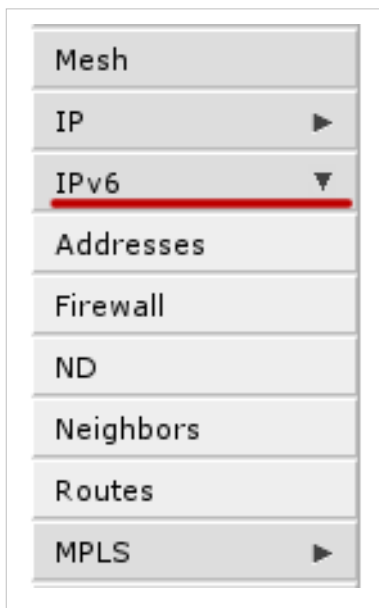
WebFig interface is designed to be very intuitive especially for WinBox users. It has very similar layout: menu bar on the left side, undo/redo at the top and work area at the rest of available space.



When connected to router, browsers title bar (tab name on Chrome) displays currently opened menu, user name used to authenticate, ip address, system identity, ROS version and RouterBOARD model in following format:

```
[menu] at [username]@[Router's IP] ( [RouterID] ) - Webfig [ROS version] on [RB model] ([platform])
```

Menu bar has almost the same design as WinBox menu bar. Little arrow on the right side of the menu item indicates that this menu has several sub-menus.



When clicking on such menu item, sub-menus will be listed and the arrow will be pointing down, indicating that sub-menus are listed.

At the top you can see three common buttons Undo/Redo buttons similar to winbox and one additional button *Log Out*. In the top right corner, you can see WebFig logo and RouterBOARDS model name.

Work area has tab design, where you can switch between several configuration tabs, for example in screenshot there are listed all tabs available in Bridge menu (Bridge, Ports, Filters, NAT, Rules).

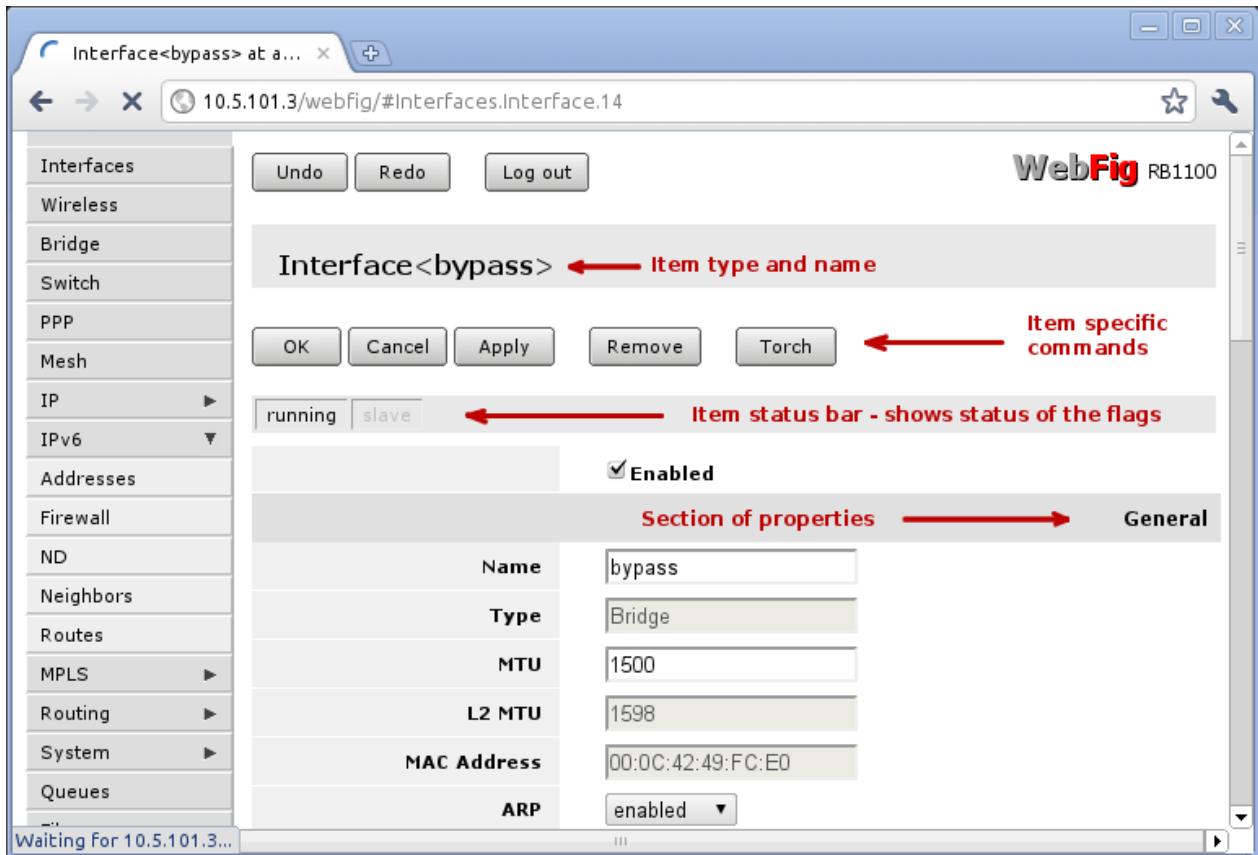
Below the tabs are listed buttons for all menu specific commands, for example *Add New* and *Settings*.

The last part is table of all menu items. First column of an item has item specific command buttons:

- E - enable current item
- D - disable current item
- - - remove current item

Item configuration

When clicking on one of the listed items, webfig will open new page showing all configurable parameters, item specific commands and status.



At the top you can see item type and item name. In example screenshot you can see that item is an *interface* with name **bypass**

There are also item specific command buttons (Ok, Cancel, Apply, Remove and Torch). These can vary between different items. For example *Torch* is available only for interfaces.

Common Item buttons:

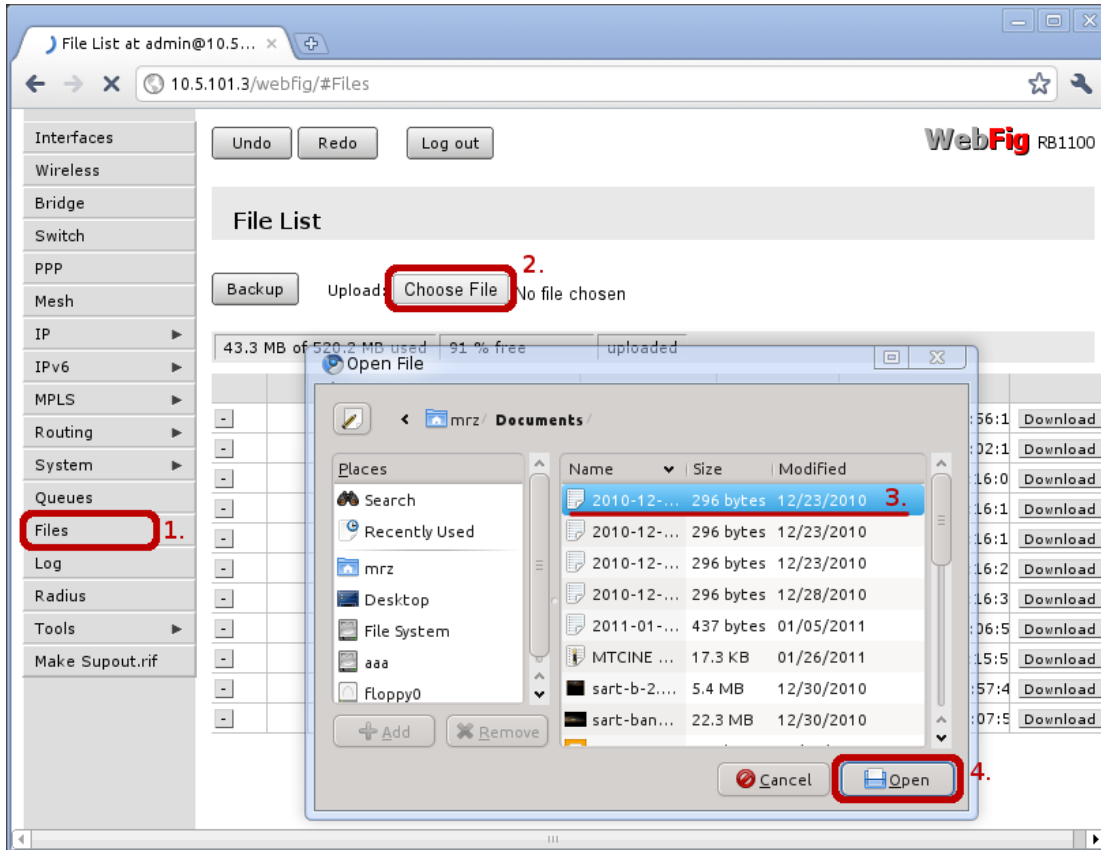
- *Ok* - apply changes to parameters and exit;
- *Cancel* - exit and do not apply changes;
- *Apply* - apply changes and stay on current page;
- *Remove* - remove current item.

Status bar similar to winbox shows current status of item specific flags (e.g running flag). Grey-ed out flag means that it is not active. In example screenshot you can see that *running* is in solid black and *slave* is grey-ed, which means that interface is running and is not a slave interface.

List of properties is divided in several sections, for example "General", "STP", "Status", "Traffic". In winbox these sections are located in separate tabs, but webfig lists them all in one page specifying section name. In screenshot you can see "General" section. Grey-edout properties mean that they are read-only and configuration is not possible.

Work with Files

Webfig allows to upload files directly to the router, without using FTP services. To upload files, open **Files** menu, click on **Choose File** button, pick file and wait until file is uploaded.



Files also can be easily downloaded from the router, by clicking Download button at the right side of the file entry.

43.3 MB of 520.2 MB used		91 % free		uploaded	
	File Name	Type	Size	Creation Time	
-	test	directory	0 B	Feb/10/2011 08:56:1	Download
-	1-route-nexthop-update.sim	.sim file	3887 B	Feb/07/2011 16:02:1	Download
-	ca.key	.key file	887 B	Jan/02/1970 05:16:0	Download
-	server.crt	.crt file	3715 B	Jan/02/1970 05:16:1	Download
-	server.key	.key file	891 B	Jan/02/1970 05:16:1	Download

Traffic Monitoring

[Top | Back to Content]

Skins

Webfig skins is handy tool to make interface more user friendly. It is not a security tool. If user has sufficient rights it is possible to access hidden features by other means.

Designing skins

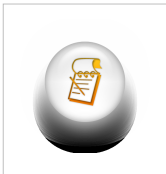
If user has sufficient permissions (group has policy edit permissions) **Design Skin** button becomes available. Pressing that toggle button will open interface editing options. Possible operations are:

- Hide menu - this will hide all items from menu and its submenus;

- Hide submenu - only certain submenu will be hidden
- Hide tabs - if submenu details have several tabs, it is possible to hide them this way;
- Rename menus, items - make some certain features more obvious or translate them into your language;
- Add note to to item (in detail view) - to add comments on filed;
- Make item read-only (in detail view) - for user safety very sensitive fields can be made read only
- Hide flags (in detail view) - while it is only possible to hide flag in detail view, this flag will not be visible in list view and in detailed view;
- Add limits for field - (in detail view) where it is list of times that are comma or newline separated list of allowed values:
 - number interval '..' example: 1..10 will allow values from 1 to 10 for fiels with numbers, example, MTU size.
 - field prefix (Text fields, MAC address, set fields, combo-boxes). If it is required to limit prefix length \$ should be added to the end, for example, limiting wireless interface to "station" only will contain
- Add *Tab* - will add grey ribbon with editable label that will separate the fields. Ribbon will be added before field it is added to;
- Add *Separator* - will add low height horizontal separator before the field it is added to.



Note: Number interval cannot be set to extend limitations set by RouterOS for that field



Note: Set fields are argument that consist of set of check-boxes, for example, setting up policies for user groups, RADIUS "Service"



Note: Limitations set for combo-boxes will values selectable from dropdown

Configure wireless interface

To configure

Status page



Note: Starting RouterOS 5.7 webfig interface adds capability for users to create status page where fields from anywhere can be added and arranged.

Status page can be created by users (with sufficient permissions) and fields on the page can be reordered.

When status page is created it is default page that opens when logging in the router through webfig interface.

Addition of fields

To add field to status page user has to enter "Design skin" mode and from drop-down menu at the field choose option - "Add to status page"

As the result of this action desired field in read-only mode will be added to status page. If at the time *Status* page is not present at the time, it will be created for the user automatically.

The screenshot shows a configuration interface with several sections:

- Tx/Rx Packets:** 653 633 / 1 925 23!
- Tx/Rx Drops:** 0 / 0
- Tx/Rx Errors:** 0 / 0
- Byte Graph:** A table with 5 rows and 3 columns. The bottom row contains '2 min ago' and '1 min ago'. A legend below shows 'Tx' in blue and 'Rx' in pink.
- Packet Graph:** A table with 5 rows and 3 columns.

A context menu is open over the 'Byte Graph' section, containing the following options:

- Add Note
- Add To Status Page
- Add Tab
- Add Separator

Two columns

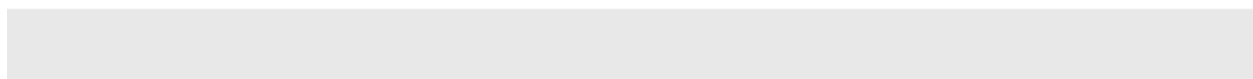
Fields in *Status* page can be arranged in two columns. Columns are filled from top to bottom.

When you have only one column then first item intended for second should be dragged to the top of the first item when black line appear on top of the first item, then drag mouse to the left until shorter black line is displayed as showed in screenshot. Releasing mouse button will create second column. Rest of the fields afterwards can be dragged and dropped same way as with one column design.

do Hide Passwords Safe Mode Design Skin Log out

Name: Save Revert Reset

WebFig v5.7 10.0.11.11



Type	Ethernet
Name	ether1

Skin design examples

Set field

Setting limits for set field

New Radius Server

Show By Default

Enabled

General

<input checked="" type="checkbox"/>	Service	<input type="checkbox"/> ppp <input type="checkbox"/> login <input type="checkbox"/> hotspot <input type="checkbox"/> wireless <input type="checkbox"/> dhcp
	<i>Limit</i>	<input style="width: 100%;" type="text" value="ppp, login, dhcp"/>

And the result:

New Radius Server

Enabled

General

Service	<input type="checkbox"/> ppp <input type="checkbox"/> login <input type="checkbox"/> dhcp
----------------	--

Using skins

To use skins you have to assign skin to group, when that is done users of that group will automatically use selected skin as their default when logging into Webfig.



Note: Webfig is only configuration interface that can use skins

If it is required to use created skin on other router you can copy files to **skins** folder on the other router. On new router it is required to add copied skin to user group to use it.

[Top | Back to Content]

Article Sources and Contributors

Manual:Webfig *Source:* <http://wiki.mikrotik.com/index.php?oldid=22200> *Contributors:* Janisk, Marisb, Normis

Image Sources, Licenses and Contributors

File:Webfig-1.png *Source:* <http://wiki.mikrotik.com/index.php?title=File:Webfig-1.png> *License:* unknown *Contributors:* Marisb

File:Webfig-2.png *Source:* <http://wiki.mikrotik.com/index.php?title=File:Webfig-2.png> *License:* unknown *Contributors:* Marisb

File:Webfig-submenu.png *Source:* <http://wiki.mikrotik.com/index.php?title=File:Webfig-submenu.png> *License:* unknown *Contributors:* Marisb

File:webfig-enable.png *Source:* <http://wiki.mikrotik.com/index.php?title=File:Webfig-enable.png> *License:* unknown *Contributors:* Marisb

File:webfig-disable.png *Source:* <http://wiki.mikrotik.com/index.php?title=File:Webfig-disable.png> *License:* unknown *Contributors:* Marisb

File:webfig-remove.png *Source:* <http://wiki.mikrotik.com/index.php?title=File:Webfig-remove.png> *License:* unknown *Contributors:* Marisb

File:webfig-3.png *Source:* <http://wiki.mikrotik.com/index.php?title=File:Webfig-3.png> *License:* unknown *Contributors:* Marisb

File:Webfig-upload.png *Source:* <http://wiki.mikrotik.com/index.php?title=File:Webfig-upload.png> *License:* unknown *Contributors:* Marisb

File:Webfig-download.png *Source:* <http://wiki.mikrotik.com/index.php?title=File:Webfig-download.png> *License:* unknown *Contributors:* Marisb

Image:Icon-note.png *Source:* <http://wiki.mikrotik.com/index.php?title=File:Icon-note.png> *License:* unknown *Contributors:* Marisb, Route

File:webfig-add-to-status-page.png *Source:* <http://wiki.mikrotik.com/index.php?title=File:Webfig-add-to-status-page.png> *License:* unknown *Contributors:* Janisk

File:webfig-two-columns.png *Source:* <http://wiki.mikrotik.com/index.php?title=File:Webfig-two-columns.png> *License:* unknown *Contributors:* Janisk

File:webfig-set-field-limits-design.png *Source:* <http://wiki.mikrotik.com/index.php?title=File:Webfig-set-field-limits-design.png> *License:* unknown *Contributors:* Janisk

File:webfig-set-field-limits-done.png *Source:* <http://wiki.mikrotik.com/index.php?title=File:Webfig-set-field-limits-done.png> *License:* unknown *Contributors:* Janisk