

---

.Balb/c

### **Abstract**

Study of Karyotyping of chromosomes from *Mus musculus* , Iraqi wildtype.  
The results showed that all chromosomes are telocentric , very small size . Also the results show no difference between wildtype and Balb/c of all chromosomes . This results of mouse chromosomes would be of considerable importance , since the mouse has been extensively used in cytogenic and genetic studies .

---

*Mus musculus*

( )

(Levan , Hsu , Stich ,

(Schnedl , 1971 a,b)

(Ford , Woollam , 1963)

1962)

Wildtype

1965 Evans  
 (Schnedl , 1971 b)

---

/ / Balb/c

---

Metaphase Bone marrow

Homologous chromosomes

50 50  
 . Standard Error

---

*Mus musculus*

C<sub>3</sub>H (Schnedl , 1971 a,b)  
 20 (Levan , Hsu , Stich , 1962)  
 (Ford , Woollam , 1963) telocentric

( ) (b,a 1)

) (1)

(1) %6.12 %6.50

%1.78 %2.56

3·2 X ( )  
 (%5.46 %5.27)

· ( %1.63 %2.53) 19 Y

· (t-test) T

Ford , Woollam, 1963 1962 Levan  
 . 1972 Zech 1971 Buckland Schnedl , 1971

Pretreatments

(Mutations) Structural Changes ( )

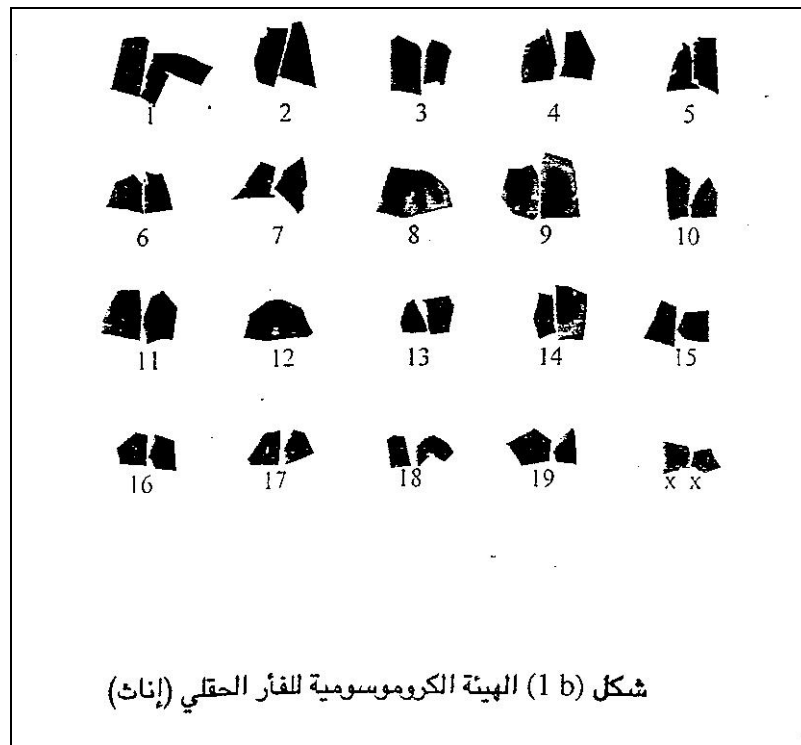
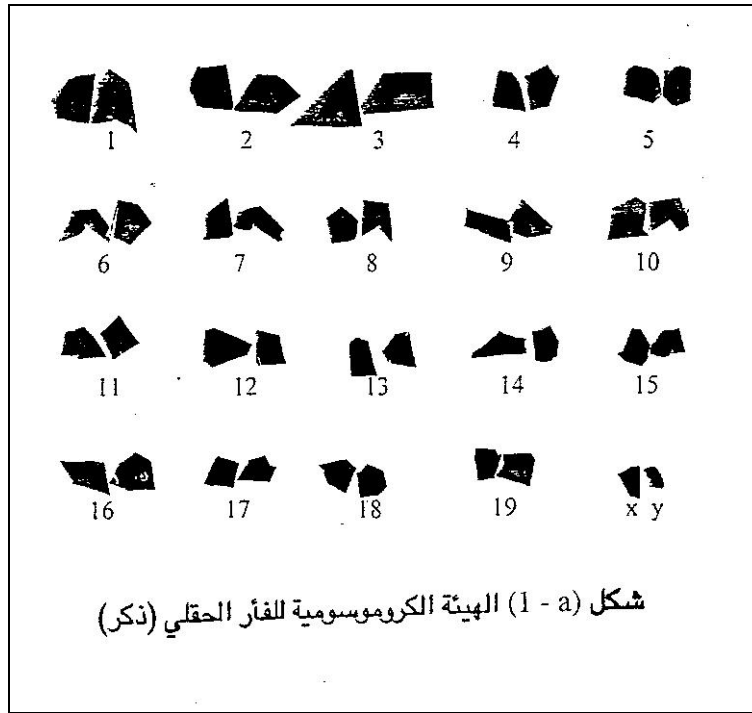
Irregularities

Anomalies

. Colchicine

(1)

Wild type	Balb/c	
±	±	
0.37 ± 6.12	0.47 ± 6.50	1
0.34 ± 5.78	0.88 ± 6.04	2
0.76 ± 5.38	0.76 ± 5.42	3
0.22 ± 4.67	0.77 ± 5.36	4
0.54 ± 4.38	0.42 ± 4.98	5
0.43 ± 4.18	0.52 ± 4.71	6
0.51 ± 3.88	0.49 ± 4.63	7
0.43 ± 3.71	0.47 ± 4.56	8
0.42 ± 3.63	0.45 ± 4.42	9
0.39 ± 3.38	0.54 ± 4.06	10
0.42 ± 3.28	0.48 ± 3.98	11
0.37 ± 3.23	0.51 ± 3.83	12
0.28 ± 3.07	0.05 ± 3.62	13
0.29 ± 3.02	0.37 ± 3.48	14
0.28 ± 2.88	0.45 ± 3.27	15
0.15 ± 2.57	0.35 ± 3.11	16
0.08 ± 2.47	0.23 ± 2.94	17
0.06 ± 2.28	0.25 ± 2.81	18
0.18 ± 1.78	0.29 ± 2.56	19
0.42 ± 5.27	0.28 ± 5.46	X
0.06 ± 1.63	0.59 ± 2.53	Y



- 
- 1- Buckland , R.; Evans , H. and Sumner , A. (1971). Identifying mouse chromosomes with the ASG technique . *Exp. Cell. Res.* 69: 231-236.
  - 2- Committee on standardization of genetic nomenclature for mice. (1972). Standard Karyotype of the mouse . *Mus musculus*. *Hered.* 63:69-72.
  - 3- Evan , H.; Ford , C.; Lyon , M. and Gray , T. (1965). DNA replication and genetic expression in female mouse chromosomes with morphologically distinguishable . *Nature.* 206: 900-911.
  - 4- Ford , E. and Woollam . D. (1963). A study of mitotic chromosomes of mice of the strongaline . *Exp. Cell. Res.* 32: 320-326.
  - 5- Levan , A.; Hsu , Y. and Stich , H. (1962). A study of the mice karyotype . *Hereditas.* 48: 677.
  - 6- Schnedl , W. (1971). Analysis of the human karyotype using a reassociation technique. *Chromosoma (Berl).* 34: 448-454.
  - 7- Schnedl , W. (1971 b). Karyotype of the mouse . *Chromosoma (Berl).* 35: 111-116.
  - 8- Zech , L.; Evans , C.; Ford , E. and Gropp , A. (1972). Banding Patterns in mitotic chromosomes of tobacco mouse . *Exp. Cell. Res.* 70: 263-268.