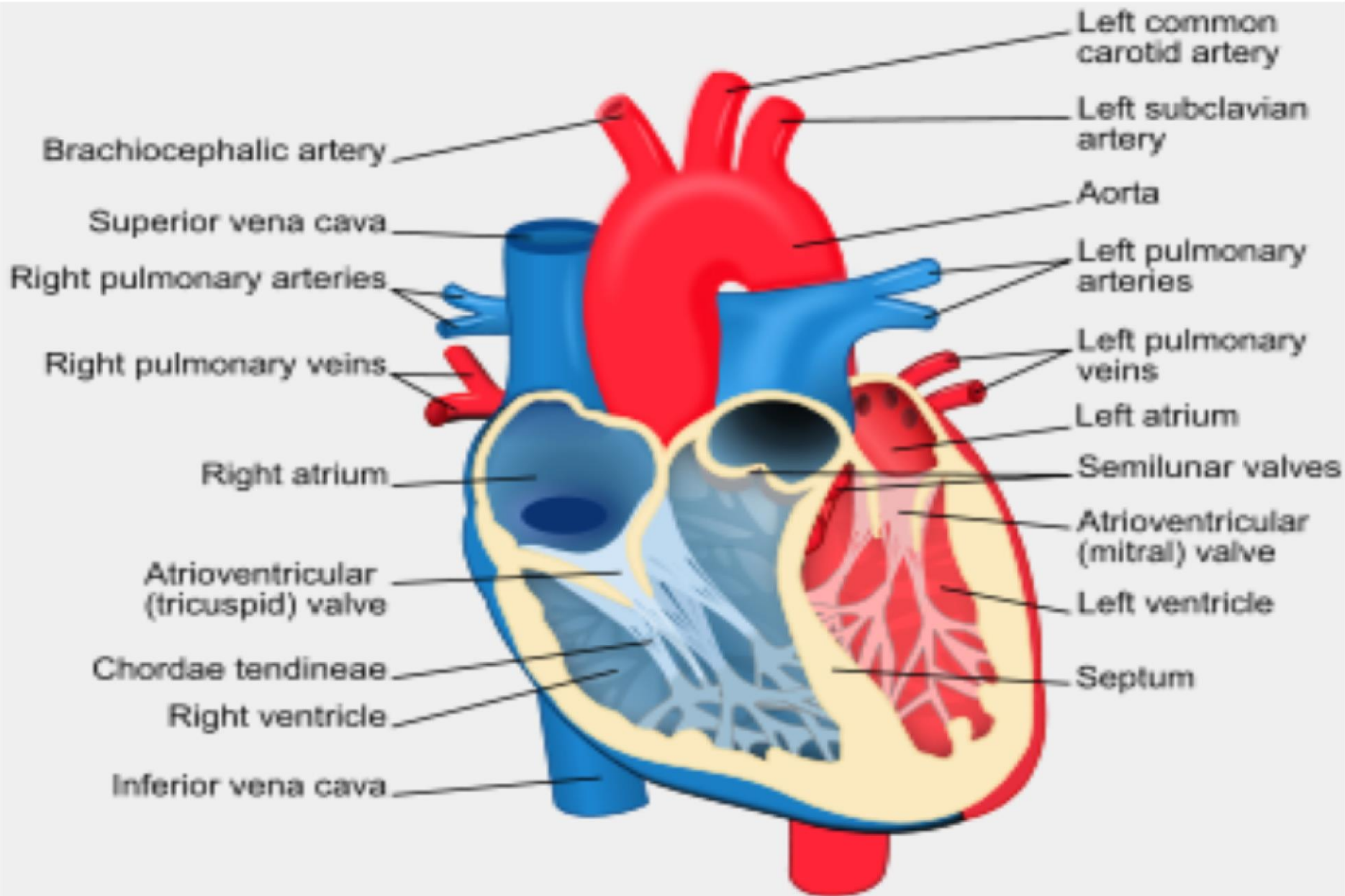


Medical Terminology

Dr. Rafal J. Al-Saigh

Cardiology



Atrium: is the upper chamber of the heart

Ventricle: is the lower chamber of the heart

Aorta: is Largest artery in the body which is pumped out the oxygenated blood from the left ventricle through the aortic valve

Coronary artery: is artery vascularizing or supplies oxygen to the heart

Mitral (bicuspid) valve: dual flap valve between the atrium & ventricle on the left side of heart

Tricuspid valve: has three leaflets and three papillary muscles lie between the atrium & ventricle on the right side of heart

Semilunar valves: are the crescent moon shape of cusps, located between the ventricles and the arteries that carry blood away from the heart.

Valvular heart disease:

- ❖ Stenosis
- ❖ Insufficiency (Regurgitation)

Conductive System

Sinoatrial (SA) node: in the right atrium inferior to the superior vena cava considered a pacemaker of the heart.

Atrioventricular (AV) node: in the right atrium in the inferior portion of the interatrial septum, picks up the signal from SA node and transmits it through its bundle (Purkinje fibers).

Cardiac Output: the volume of blood being pumped by the heart in one minute.

Systolic pressure : highest pressure **while Diastolic pressure** lowest pressure.

Sphygm/o/ man/o/ meter

Pulse - pressure - measurement
WR - WR - suffix

- Means a device used to measure blood pressure



Lymph - angi/o/ - oma

Lymphatic - vessel - tumor (benign)
WR - suffix

- tumor consisting of Lymphatic blood vessels.



Thrombo - Phleb - itis

Blood clot - vein - Inflammation
WR - WR - suffix

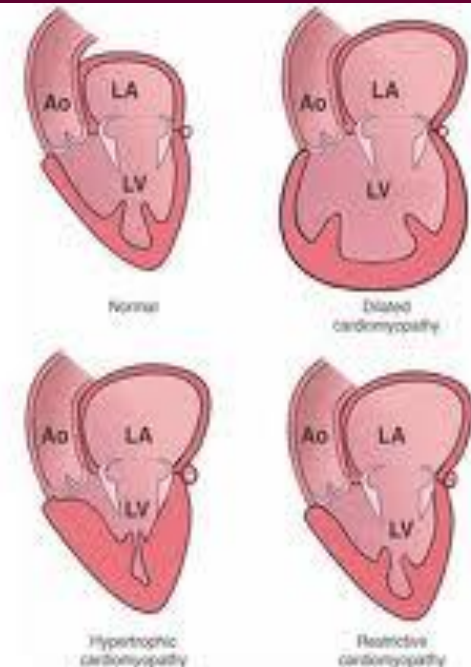
- inflammation of a vein with the formation of a blood clot



Cardio - myo - pathy

heart - muscle - disease
WR - WR - suffix

- any disease that affects the structure and function of the heart muscle.

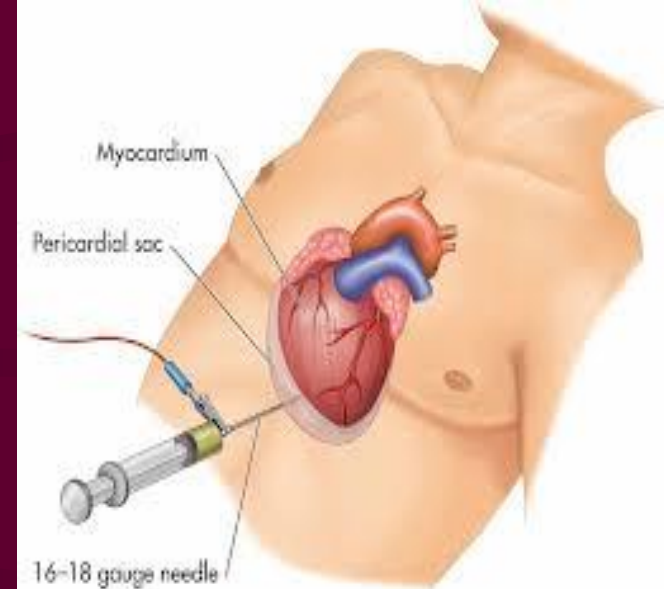


Peri - cardio - centesis

Around - heart - aspiration

Prefix - WR - suffix

- surgical puncture of the pericardium to remove excess fluid in the pericardial sac.



A -rrhythm - ia

Without - heart beat - relating to

Prefix - WR - suffix

- Abnormal heart beat rhythm.



Hypo - kale - mia

Low - potassium - in blood

Prefix - WR - suffix

- deficient potassium level in the blood

Hyper - natre - mia

High - sodium - in blood

Prefix - WR

- excessive sodium level in the blood.

Ather/o/ - scler - osis

Fatty - hardening - abnormal condition

WR - WR - suffix

- abnormal condition of fatty plaque buildup on the inner lining of the artery.

Leuk/o - cyt/o - penia

White - Cell - deficiency

Prefix - WR - suffix

- Decrease in the number of white blood cells (leukocytes) in the blood.

Thromb/o/ - asthen - ia

platelets - weakness - abnormal condition

WR - WR - suffix

- platelets dysfunction.

Phag/o - cyt/o - osis

Eating - Cell - Disease

Prefix - WR - suffix

- Engulfment of particulate matter by phagocytes usually associated with their destruction.

Hyper/ pyrex/ ia

High

- temperature

- abnormal condition

WR

- WR

- suffix

- very high body temperature above 40°C.

Hem/o - rrhage

Blood

- Discharge

WR

- suffix

- Bleeding.

GENITOURINARY TRACT

Adrenal
(suprarenal) glands

Right kidney

Inferior vena cava

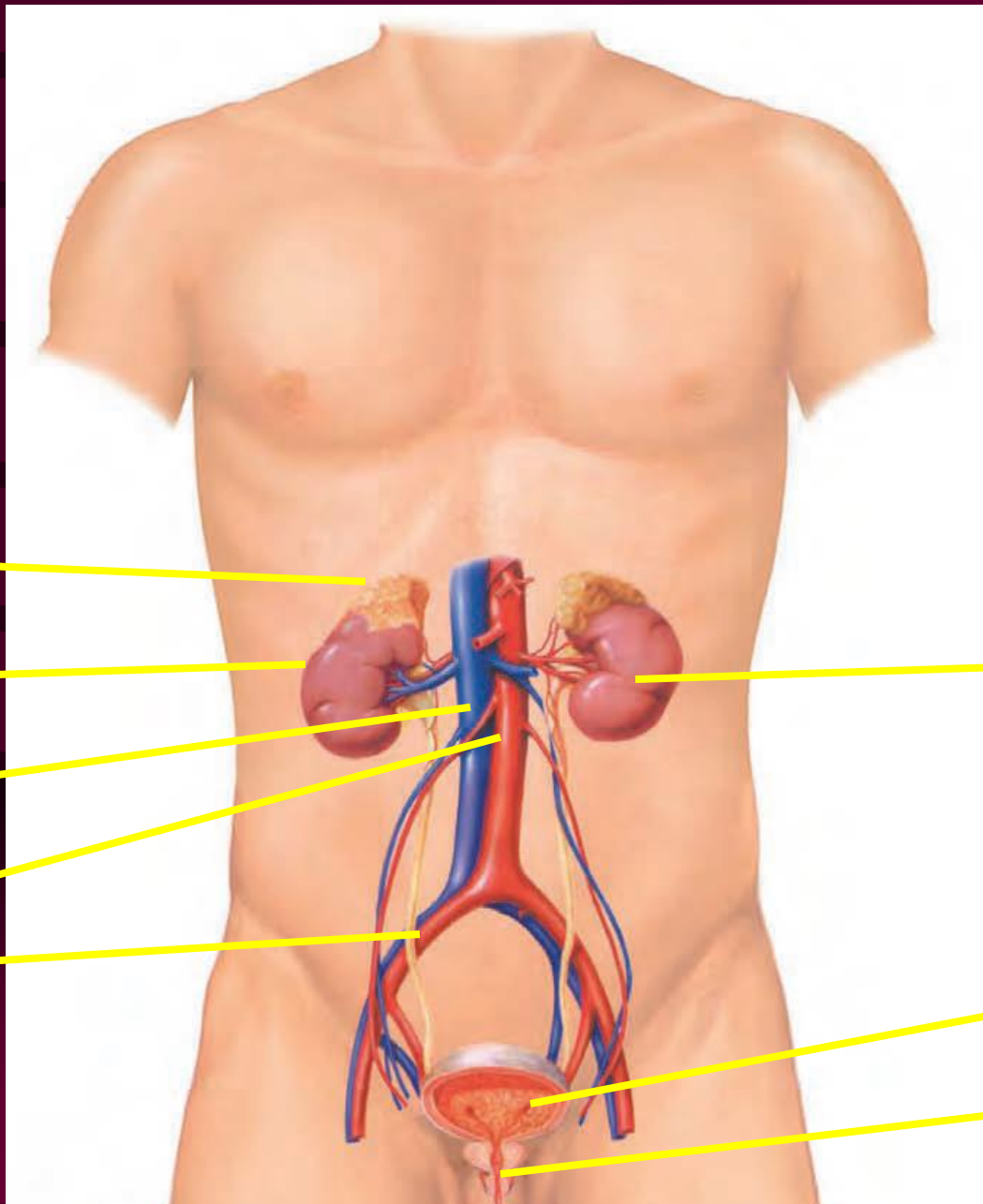
Abdominal aorta

Ureters

Left kidney

Ureteral orifice

Urethra



Cysto/

Bladder

WR

Vesico/

- WR

Cysto/

scope

urin. bladder -

WR

visualization

- suffix

- Visualization of urinary bladder

Vesico/

lithiasis

urin. bladder -

WR

stone

- suffix

Nephro/ stomy

Kidney - incision

WR

- suffix

Glomerulo/ nephro/ itis

glomerulus- Kidney - inflammation

WR-

WR

- suffix

Meat/ us

opening orifice - pertaining

WR-

- suffix

Ure/ m (i)/ ia
urea - blood pertaining
WR- WR - suffix

ureter/o/ cele
ureter- cyst
WR- - suffix

THANK YOU