

Medical Terminology

Respiratory System

Dr. Rafal J. Al-Saigh

Rhin/ o/ rrhea

Nose

WR-

- discharge

suffix

Pharyng/

Throat

WR

itis

- inflammation

-suffix

Pneumon/ ectomy

Lung - excision

WR - suffix

Thorac/ o/ pathy

Chest - diseases

WR - suffix

An -osmia

Without
Prefix - smell
- WR

Hyp(o) -ox- ia

Low- oxygen- abnormal condition
Prefix - WR- suffix

Py/ o/ thorax

Pus - chest

Prefix - WR

Cyan/ osis

Bluish discoloration- abnormal condition

Prefix /WR- suffix

Aer/ o/ phagia

Air

WR-

-swallowing

suffix

Para/ nas/ al

Beside-

Prefix -

nose-

WR-

pertaining to

suffix

Rhin/ o/ rrhagia

Nose

-bleeding

WR-

suffix

Aer/ o/ hydr/ o/ therapy

Air-

water-

treatment

WR -

WR-

suffix

Pleuro/ dynia

Plura

-pain

WR-

suffix

severe pain in the muscles between the ribs or in the diaphragm

Phren/ o/ spasm

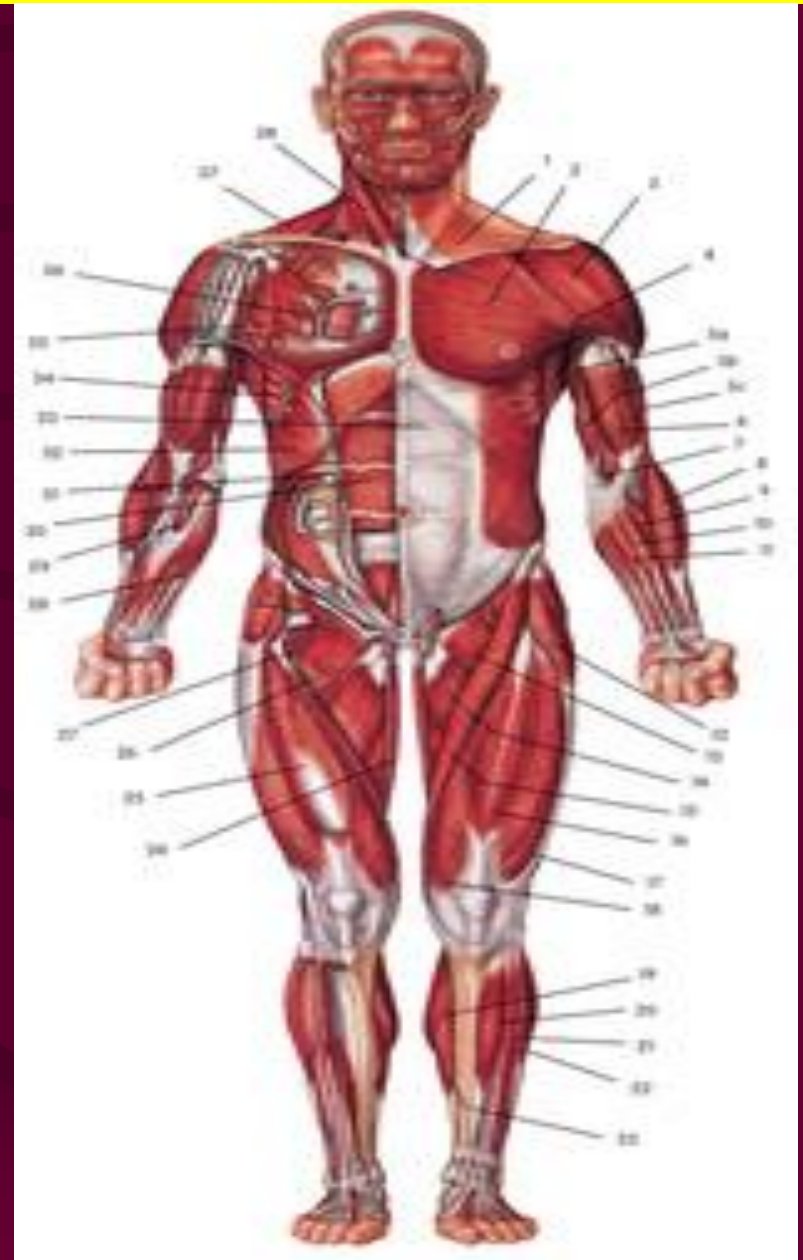
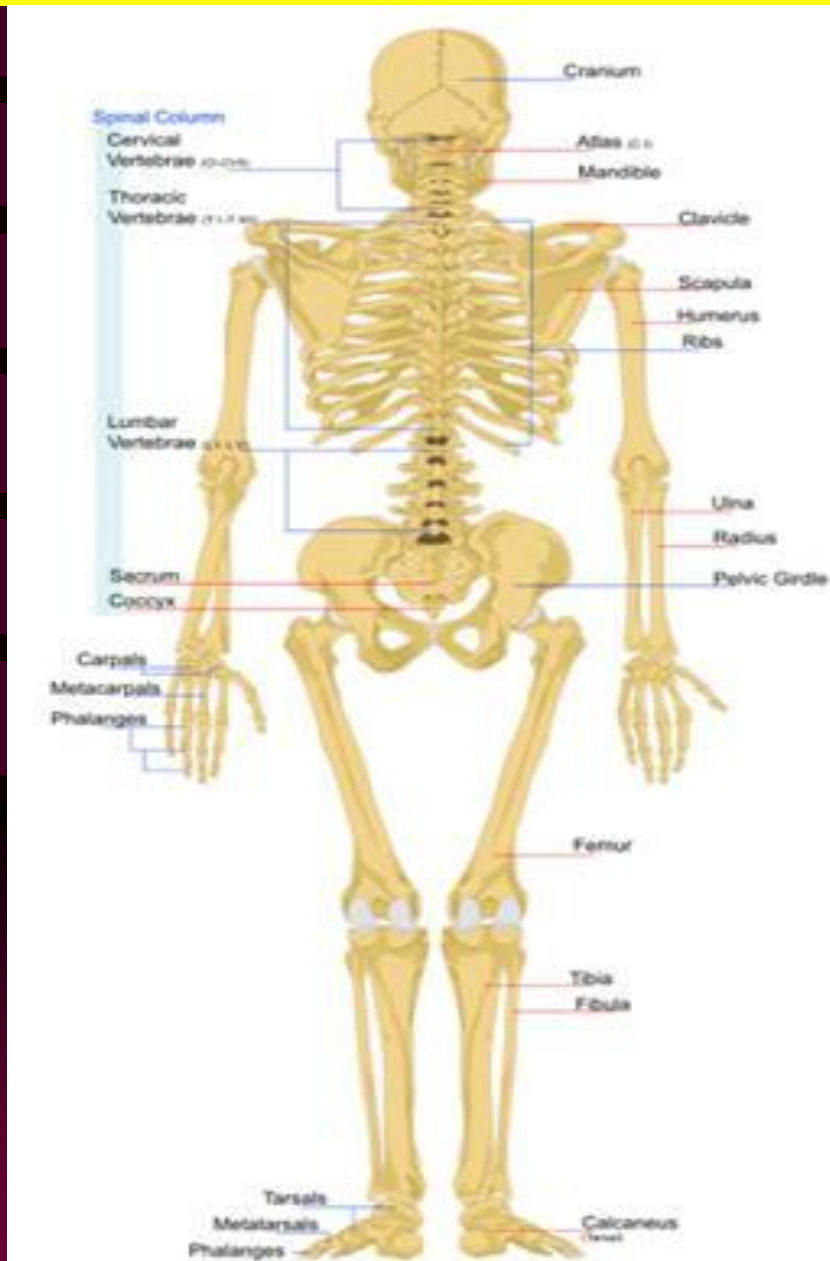
Diaphragm-

contraction

WR -

suffix

Musculoskeletal System



Arthr/ o /plasty

Joint - surgical repair

WR - suffix

Osteo/ ather/ osis

Bone - joint - abnormal condition

WR- WR - suffix

Cephal -algia

Head - pain

WR - suffix

oste/o /chondr/ oma

Bone- cartilage - Benign tumor

WR - suffix



Myo/ **rrhexis**

Muscle

- rupture

WR

- suffix



my/o : muscle

-rrhexis: rupture

Ab / **norm / al**

Away, far

- ordinary - relating to

Prefix

- WR

- suffix

Macro / cephal/ ic

Large
Prefix

- head
- WR

- relating to
- suffix



Sub / stern / al

Under
Prefix

- sternum
- WR

pertaining to
- suffix

Pod/ iatry

Foot - specialty

WR - suffix

specialty concerned with treatment and prevention of conditions of the human foot

Neur/ o/ path/y

Nerve - disease

WR - suffix

- any disease of the nerves

Cyt/ o/ logist

Cell

- specialist

WR

- suffix

- Person who specializes in the study of cells

Crani/o - cervi/ - al

Skull

- neck

- pertaining to

Prefix

- WR

- suffix

Lumb/

ar

Vertebrae

Lower back

pertaining to

Spine

WR

- suffix

- WR

Hypo/

chondr/

iac

Under

- cartilage-

pertaining to

Prefix-

WR

- suffix

Gluc/ o/ genesis

Glucose

WR

production

suffix

Braci/ o/ plasty

Arm

WR

- surgical repair

- suffix

1. Macrocephalic

2. Anosmia

3. Phrenospasm

THANK YOU