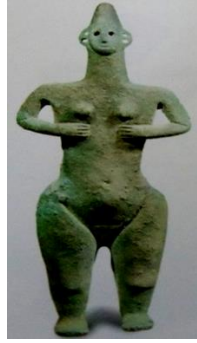


الدمى والنحت البارز عيلامي حديث



مارليك تبة ١٠٠٠ - ١٢٠٠



١٢٠٠ - ١٥٠٠ لورستان



١١٠٠ - ١٢٠٠ مارليك تبة



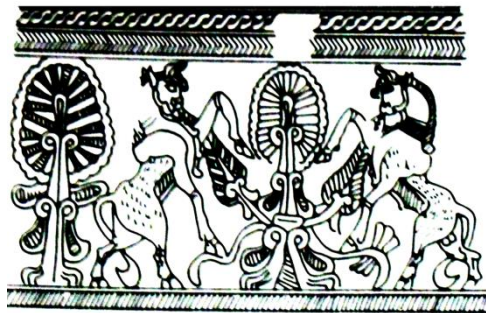
84
Rock-face relief of Hanni, Elamite
king of Aiapir, in Izeh (Malamir),
Bakhtiari Mountains, mid-7th c. B.C.



Neo-Elamite pyxis (see No. 165)



Neo-Elamite pyxis, H. 17 cm., 7th c. B.C., Susa, Louvre



Neo-Elamite vase decoration, H. 20.5 cm., 7th c. B.C., Susa, Louvre



163
Vase shaped like a man offering a libation, 8th–7th c., Luristan, Archaeol. Mus., Teheran